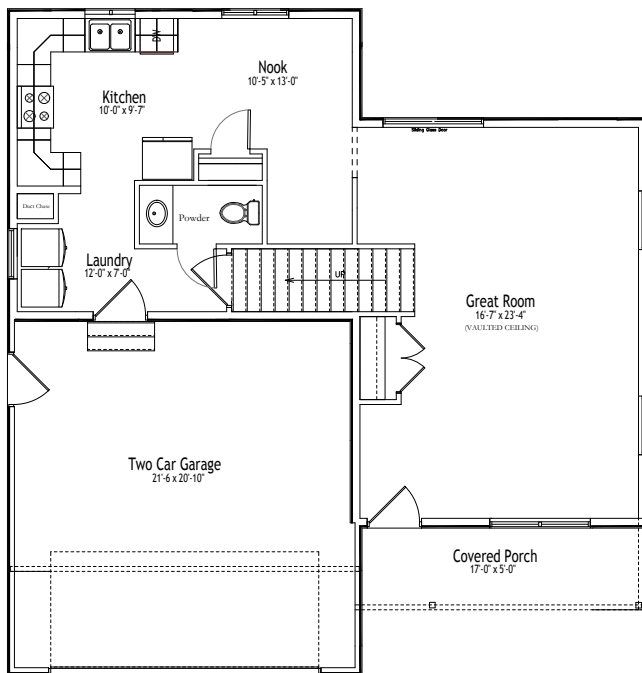


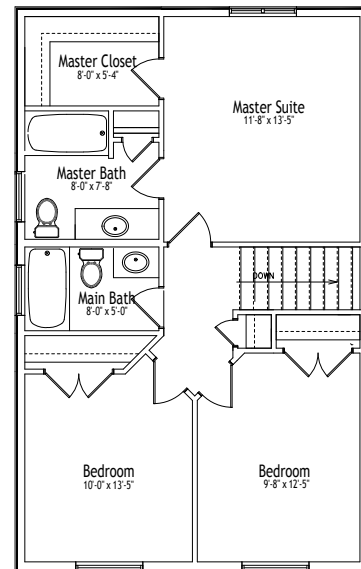
© 2017 Rural Housing Development Corporation
 Measurements are approximate and may be subject to change.

Country Appeal

Option 2



1 Main Floor Plan
 Z1.1 Scale: NTS



1 Second Floor
 Z1.1 Scale: NTS

Main Level: 822 SF
 Basement Level: 895 SF
 Upper Level: 710 SF
 Total: 2427 SF

Bedrooms: 3
 Baths: 2
 Width: 38' 0"
 Depth: 39' 6"



www.SelfHelpHomes.org